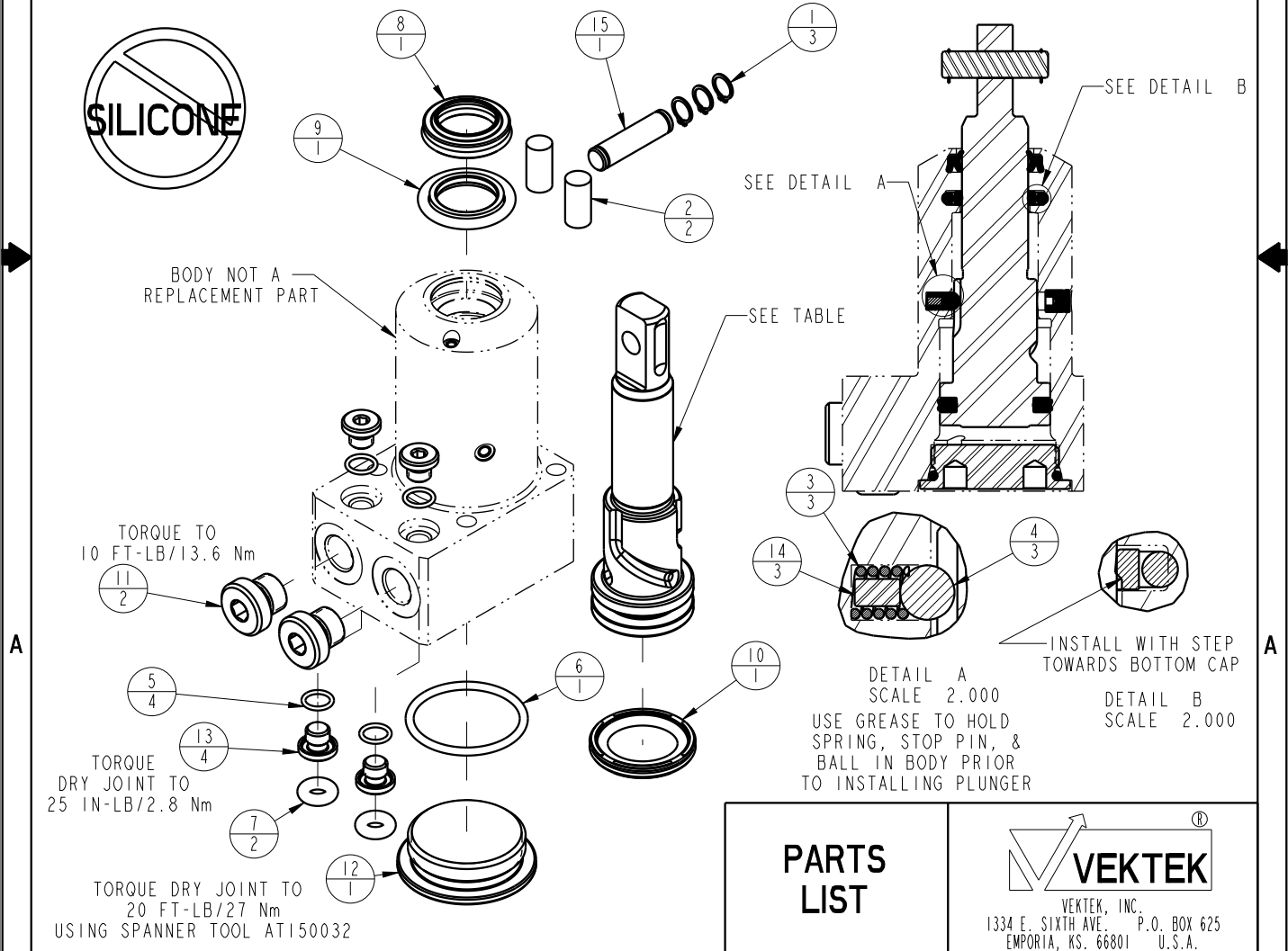


ASSEMBLED MODEL NO.	PLUNGER PART NO.	CAM STYLE	ASSEMBLED ORIENTATION	
LI-4125-10-S-0	81400211	STR	0	
LI-4125-10-S-60			60	
LI-4125-10-S-120			120	
LI-4125-10-S-30			30	
LI-4125-10-S-90			81400241	90
LI-4125-10-S-150			150	
LI-4125-10-L-0	81400221	LH	0	
LI-4125-10-L-60			60	
LI-4125-10-L-120			120	
LI-4125-10-L-30			30	
LI-4125-10-L-90			81400251	90
LI-4125-10-L-150			150	
LI-4125-10-R-0	81400231	RH	0	
LI-4125-10-R-60			60	
LI-4125-10-R-120			120	
LI-4125-10-R-30			30	
LI-4125-10-R-90			81400261	90
LI-4125-10-R-150			150	

NO	QTY	PART NO	DESCRIPTION	SEAL KIT	CLEVIS PIN KIT
1	3	23050032	RING, RTNG, EXT, 0.236		X
2	2	23340001	STOCK, CORD, .25 X .50, 50, NBR		X
3	3	23350085	SPRING, COMPRESSION	X	
4	3	23650009	BALL, TUNGSTEN-CARBIDE, 4mm	X	
5	4	39051079	O-RING, (6mm X 1)	X	
6	1	39051081	O-RING, (26mm X 2)	X	
7	2	39051087	O-RING, (4mm X 3)	X	
8	1	39053041	SEAL, WIPER, SNAP IN, WED, 15, 94A, AU	X	
9	1	39056001	SEAL, STEP, ROD, 15	X	
10	1	39056021	SEAL, CAP, PISTON, 25, 90A, AU GRPHT FLD	X	
11	2	43068004	PLUG, SOCH, G1/8		
12	1	81400151	CAP, LC/SC, 7MPa, 25B		
13	4	81400200	PLUG, MANIFOLD, 7MPa, M6		
14	3	81400202	PIN, STOP, BALL, METRIC, 4mm BALL	X	
15	1	81400271	PIN, ROCKER, SC, 7MPa, 25B		X
N/A	N/A	L6014250	KIT, SEAL, SC, 7MPa, 25B	NOTED	N/A
N/A	N/A	L6214250	KIT, CLEVIS PIN, SC, 7MPa, 25B	N/A	NOTED



PARTS LIST	
	VEKTEK, INC. 1334 E. SIXTH AVE. P.O. BOX 625 EMPORIA, KS. 66801 U.S.A.
ASSEMBLIES AFFECTED SEE ASSEMBLY MODEL NO. TABLE ABOVE	PARTS LIST, ASSY, SC, BF, 7MPa, 25B, CLEVIS
SIZE A	LPL1430
REV B	

B	3273	RELEASE	JDW	08/15/18
REV	IN ACCORDANCE WITH ECN	EFFECTIVE DATE	REVISED BY	DATE
DRW BY: MAJ	DRAWING STATUS: Released PRODUCTION APPROVED FOR RELEASED STATUS ONLY			
DATE: 4-16-15				